

MARCH WEANLING & STORE CATTLE SALE



LOTS 225-229 FROM JW, BE & PW SEMPLE, KENILWORTH

THURSDAY 4TH MARCH 2021

Approx 165 Head

WEANLINGS 10:30AM
STORE CATTLE 11:00AM

The Charolais Pavilion, Avenue M, Stoneleigh Park,
Kenilworth, Warwickshire CV8 2RG

02476 697731 | www.rugbyfarmersmart.com | 43/139/8013

CATALOGUE

Thursday 4th March 2021

Catalogue presented WITHOUT PREJUDICE For guidance only.

FA - DENOTES PRODUCERS HAVE DECLARED THEIR STOCK AS FARM ASSURED

CATTLE MUST BE PENNED BY 9:30AM

— **WEANLINGS (Start 10.30am)**

<u>PEN</u>	<u>LOT</u>		<u>J BRUCE, PERSHORE</u>	
			TB:8.2.21	
<u>66-67</u>	<u>201-207</u>	12	Holstein Friesian Steers & Heifers	8-10 months

MORE WEANLINGS INVITED ON THE DAY

— **COWS & CALVES**

<u>PEN</u>	<u>LOT</u>		<u>MEADOW FARMS, RUTLAND</u>	
			TB:TBC	
68	208-212	5	Hereford Cows <i>with their Hereford calves at foot</i>	2015-2017 3 weeks

— **IN-CALF COW**

<u>PEN</u>	<u>LOT</u>		<u>ABINGDON & WITNEY COLLEGE</u>	
			TB:TBC	
69	213	1	Pedigree In-Calf Whitebred Shorthorn Cow (Longley Rose Lead 23rd) <i>in-calf to Pedigree Whitebred Shorthorn Bull (Ben Ledi Joe 4th) to calve from 24th April Docile, easy calving cow with daughters & granddaughters in the herd. Herd tested recently as BVD Negative</i>	2009

— **GRAZING COWS**

<u>PEN</u>	<u>LOT</u>		<u>F TYLER, BERSKWELL</u>	
			TB:TBC	
70	214	1	Hereford Grazing Cow	2015

AA FYFE & SONS, YELVERTOFT

TB:TBC

71	215-217	2	Bazadaise Grazing Cows	
		1	British Blue Grazing Cow	

— I FEEDING BULL

<u>PEN</u>	<u>LOT</u>		<u>TOWNSHEND PARTNERS, ASTLEY</u>	<u>FA</u>
			TB: TBC	
38	218	1	Blonde x Bull	12 months
			<i>All had Rispoval intranasal & Rispoval 4 as calves</i>	

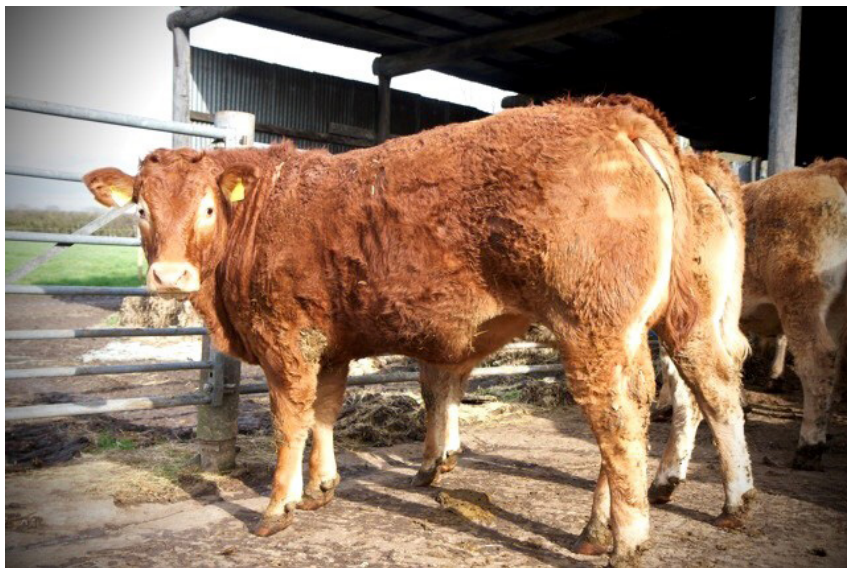
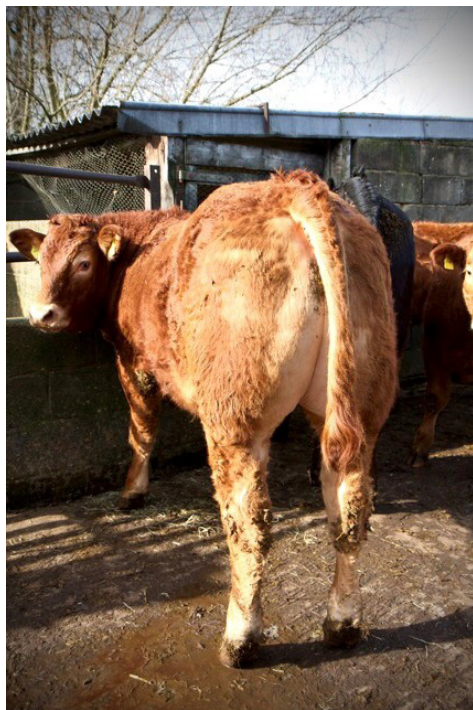
— I STORE CATTLE

<u>PEN</u>	<u>LOT</u>		<u>F TYLER, BERSKWELL</u>	
			TB:TBC	
40	219	1	Limousin x Steer	10 months
			<i>Homebred & Single Suckled</i>	
			<u>W TAYLOR, BERKSWELL</u>	
			TB:2.2.21	
41-42	220-224	6	Limousin x Steers & Heifers	10 months
		3	Limousin x Steers & Heifers	12 months
			<i>Weaned at Christmas, Homebred & Single Suckled</i>	
			<u>JW, BE & PW SEMPLE, KENILWORTH</u>	<u>FA</u>
			TB:25.2.21	
43-44	225-229	4	Limousin x Steers	10-11 months
		4	Limousin x Heifers	11-13 months
			<i>High Health Scheme, BVD Tag Tested and Heifers Vaccinated, Homebred & Single Suckled, Some Heifers Poll for breeding</i>	
			<u>JB HM & J GILBERT, ARLEY</u>	<u>FA</u>
			TB:29.1.21	
45	230-231	2	Limousin Steers	9-11 months
			<i>Homebred & Single Suckled</i>	
			<u>BELLAMY, TAVISTOCK</u>	
			TB:TBC	
46-48	232-243	22	Aberdeen Angus Steers & Heifers	11-13 months
			<i>Registered Sires</i>	

<u>PEN</u>	<u>LOT</u>		<u>JHB HART, SIBBERTOFT</u>	<u>FA</u>
			TB:9.2.21	
49	244-247	6	Blonde x Heifers <i>Homebred & Single Suckled</i>	12-14 months
			<u>F WHITE, RATLEY</u>	
			TB:TBC	
50	248-252	2	Simmental x Steers	12-13 months
		2	Limousin x Steers	12-13 months
		1	British Blue x Steer	12 months
			<u>P J BETTERIDGE, FILLONGLEY</u>	
			TB:22.2.21	
51-52	253-260	12	Aberdeen Angus x Steers <i>Registered Sire Eastern Grey, Homebred & Single Suckled</i>	12-14 months
			<u>T LOWICK, LITTLE BRINGTON</u>	<u>FA</u>
			TB:TBC	
53-54	261-268	12	Limousin x Steers <i>Homebred & Single Suckled</i>	12-14 months
			<u>NEW PASTURES CARE FARM LTD, HARBURY</u>	
			TB:26.2.21	
55	269-273	9	Aberdeen Angus x Heifers <i>Registered Sires</i>	14-15 months
			<u>R L ROOT & SON, ENDERBY</u>	
			TB:1.2.21	
56	274-278	6	Aberdeen Angus Steers & Heifers <i>Registered Rawburn Sire, Homebred & Single Suckled</i>	14-17 months
			<u>RJ LIVESTOCK, CULLOMPTON</u>	
			TB:TBC	
57-58	279-285	5	Limousin x Steers & Heifers	12-14 months
		5	Limousin x Steers & Heifers <i>Single Suckled</i>	18-22months

<u>PEN</u>	<u>LOT</u>		<u>P & S DAVENPORT, RYTON ON DUNSMORE</u>	
			TB:22.2.21	
60	286-287	1	Limousin Steer	19 months
		1	Limousin Heifer	19 months
			<i>Homebred & Single Suckled</i>	
			<u>MANOR FARM PARTNERSHIP, GREAT WOLFORD</u>	
			TB:4.2.21	
61	288-290	1	Aberdeen Angus x Steer	20 months
		1	Hereford x Heifer	19 months
		1	Charolais x Heifer	22 months
			<u>TOWNSHEND PARTNERS, ASTLEY</u>	<u>FA</u>
			TB: TBC	
62	291-294	1	Hereford x Steer	24 months
		2	Blonde x Simmental (twin) Heifers	18 months
		1	Pure Blonde Heifer	21 months
			<i>All had Rispoval intranasal & Rispoval 4 as calves</i>	
			<u>TOWNSHEND PARTNERS, STUDLEY</u>	<u>FA</u>
			TB: TBC	
63-64	295-301	4	Beef Shorthorn Steers	22 months
		4	Blonde Heifers (out of Simmental cows)	22 months
		1	Blonde Steer	23 months
		2	Black & White Steers	23 months
			<i>Blondes are Homebred</i>	

LOTS 225-229 FROM JW, BE & PW SEMPLE, KENILWORTH



****ALL NEW CUSTOMERS must provide an auctioneer's reference.**

<p>TIME OF ARRIVAL Vendors are encouraged to book in their cattle at least 2 hours prior to being sold to ensure that purchasers are able to read all the information regarding vendors' stock on the overhead screen in the sale ring. Market gates open at 6.00am.</p>
<p>DELIVERY OF PASSPORT Could vendors and/or hauliers please deliver cattle passports and accompanying documents to the BLUE BOOKING IN OFFICE at the bottom of the cattle race.</p>
<p>EAR TAGGING All cattle – Born: after 1st April 1998 – must be tagged with two approved ministry ear tags before entering the market. Unfortunately we do not have the facilities to tag cattle in the market on the day of sale.</p>
<p>IN-CALF HEIFERS All heifers are sold on the basis that they are not in-calf unless otherwise stated. If any animals have to be returned to the vendor after being 'PD'd' in-calf, the purchaser will be reimbursed the material costs displayed in the 'LAA Conditions of Sale'. Keep is charged at £9 per week from 1st November to 31st April, and £5 per week at grass.</p>
<p>CONDITIONS OF SALE All stock will be sold in accordance with the 'Livestock Auctioneers Association Conditions of Sale 1998' as varied. A copy of which is on display in the market office.</p>

1	Mortality Warranty
	Subject to the conditions set out below RFM agrees to repay the hammer price of any animal sold at its auctions which dies within seven days of the date of the fall of the hammer as a direct result of a condition which existed at the time of the fall of the hammer ("the mortality warranty"). RFM will not make any payment over and above the hammer price nor reimburse any consequential losses or incidental expenses incurred.
2	Conditions
	The conditions which must be satisfied before payment by RFM pursuant to the Mortality Warranty set out in sub condition 1 above are as follows:
2.1	The Buyer must notify RFM in writing of the death of an animal which may give rise to a claim pursuant to the Mortality Warranty ("a Claim Notice") so that such Claim Notice is received in the office of RFM within 24 hours of such death and then at the Buyer's own cost produce a certificate from a qualified veterinary surgeon:
A)	Confirming the cause of death, and
b)	Confirming the veterinary surgeon's opinion that such cause existed at the time of the fall of the hammer, and
c)	Confirming whether, in the veterinary surgeon's opinion, there is anything which might give rise to the belief that at the time of the sale the vendor of such animal knew or ought to have known of, or had good reason to suspect the existence of the condition which caused the death, or of any symptoms connected with such condition. Such certificate to be produced to RFM within 48 hours of death.
2.2	If RFM so wishes, it may at its own cost obtain a certificate from the veterinary surgeon of its own choice within three days of notification of death by a Buyer.
2.3	The Buyer shall not dispose of any animal in respect of which they intend to claim pursuant to the Mortality Warranty until three days have expired since the Buyer has given a Claim Notice and given the opportunity for RFM or its nominated veterinary surgeon to inspect such animal as soon as it wishes during that time.
2.4	No payment will be made pursuant to the Mortality Warranty where RFM's veterinary surgeon certifies that the Buyer or the employee's agents, subcontractors or independent contractors engaged by the Buyer or their agents have caused or contributed to the death of the animal by the Buyer's own actions or omissions or those of the Buyer's employees agents subcontractors or independent contractors and the certificate of such veterinary surgeon shall be final and binding upon the Buyer and RFM.
3	Vendor's Responsibility

COVID 19

PLEASE REGISTER YOUR ATTENDANCE AT THE MARKET OFFICE, WEAR A FACE COVERING AND SOCIAL DISTANCE AT ALL TIMES THANK YOU



THE MIDLANDS MART

RUGBYFARMERSMART.COM

FORTHCOMING SALES

**THURSDAY 18TH MARCH
STORE CATTLE SALE**

**Vendors who are wishing to sell stock
please feel free to contact:**

Tom Wrench - 07774 723758

Gareth Doyle- 07902 330623

Richard Goodwin- 07902316268

Tim Webster-07437 101163

who will gladly make

A FREE ON FARM VISIT & VALUATION



Follow us on social media:

Facebook & Twitter - @RFMMidlandsMart

Instagram - rugbyfarmersmartltd